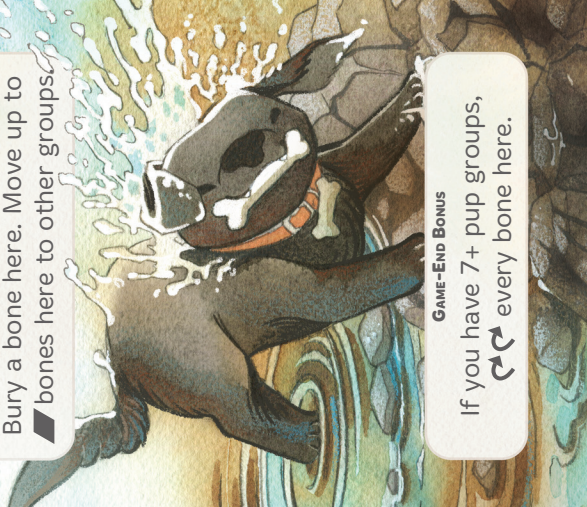


03 : **Clever Lab**
each bone in one pile with **▲** bones or less.

02 : **Brave Lab**
Bury a bone here. Move up to **▲** bones here to other groups.

01 : **Noble Lab**
Move up to **▲** of your bones to here. **↻** a bone here.

00 : **Loyal Lab**
↻ bones here.
Bury a bone here.



GAME-END BONUS
If you have 7+ pup groups, **↻** every bone here.

GAME-END BONUS
If you have 7+ pup groups, **↻** every bone here.

GAME-END BONUS
If you have 7+ pup groups, **↻** every bone here.

GAME-END BONUS
If you have 7+ pup groups, **↻** every bone here.

GAME-END BONUS
If you have 7+ pup groups, **↻** every bone here.

GAME-END BONUS
If you have 7+ pup groups, **↻** every bone here.

GAME-END BONUS
If you have 7+ pup groups, **↻** every bone here.

GAME-END BONUS
If you have 7+ pup groups, **↻** every bone here.



07 : **Playful Lab**
Draw **▲** pups. Play them all, ignoring their effects.

06 : **Loving Lab**
▲ groups each bury a bone.

05 : **Caring Lab**
One group with no bones buries **▲** bones.

04 : **Crafty Lab**
Each group with less than **▲** bones buries a bone.



11

Noble Husky

Move up to ● of your bones to here. ↻ a bone here.

10

Loyal Husky

↻ bones here. ● Bury a bone here.

09

Friendly Lab

Bury a bone here. ↻ one bone at each of ▣ different groups.

08

Proud Lab

Bury ▣ bones here.

GAME-END BONUS

For each ▲ Aussie you have, ↻ a bone here.

GAME-END BONUS

For each ▲ Aussie you have, ↻ a bone here.

GAME-END BONUS

If you have 7+ pup groups, ↻ every bone here.

GAME-END BONUS

If you have 7+ pup groups, ↻ every bone here.

15

Caring Husky

One group with no bones buries ● bones.

14

Crafty Husky

Each group with less than ● bones buries a bone.

13

Clever Husky

↻ each bone in one pile with ● bones or less.

12

Brave Husky

Bury a bone here. Move up to ● bones here to other groups.

GAME-END BONUS

For each ▲ Aussie you have, ↻ a bone here.

GAME-END BONUS

For each ▲ Aussie you have, ↻ a bone here.

GAME-END BONUS

For each ▲ Aussie you have, ↻ a bone here.

GAME-END BONUS

For each ▲ Aussie you have, ↻ a bone here.



19 **Friendly Husky**

Bury a bone here. ↻ one bone at each of ● different groups.

18 **Proud Husky**

Bury ● bones here.

17 **Playful Husky**

Draw ● pups. Play them all, ignoring their effects.

16 **Loving Husky**

● groups each bury a bone.

GAME-END BONUS

For each ▲ Aussie you have, ↻ a bone here.

GAME-END BONUS

For each ▲ Aussie you have, ↻ a bone here.

GAME-END BONUS

For each ▲ Aussie you have, ↻ a bone here.

GAME-END BONUS

For each ▲ Aussie you have, ↻ a bone here.

23 **Clever Maltese**

↻ each bone in one pile with + bones or less.

22 **Brave Maltese**

Bury a bone here. Move up to + bones here to other groups.

21 **Noble Maltese**

Move up to + of your bones to here. ↻ a bone here.

20 **Loyal Maltese**

↻ + bones here. Bury a bone here.

GAME-END BONUS

For each bone your ● Poms have, ↻ a bone here.

GAME-END BONUS

For each bone your ● Poms have, ↻ a bone here.

GAME-END BONUS

For each bone your ● Poms have, ↻ a bone here.

GAME-END BONUS

For each bone your ● Poms have, ↻ a bone here.



+ 27 : **Playful Maltese**

Draw pups. **+** Play them all, ignoring their effects.



GAME-END BONUS

For each bone your **● Poms** have, **↻** a bone here.

+ 26 : **Loving Maltese**

+ groups each bury a bone.



GAME-END BONUS

For each bone your **● Poms** have, **↻** a bone here.

+ 25 : **Caring Maltese**

One group with no bones buries **+** bones.



GAME-END BONUS

For each bone your **● Poms** have, **↻** a bone here.

+ 24 : **Crafty Maltese**

Each group with less than **+** bones buries a bone.



GAME-END BONUS

For each bone your **● Poms** have, **↻** a bone here.

★ 31 : **Noble Pit Bull**

Move up to **★** of your bones to here. **↻** a bone here.



GAME-END BONUS

↻↻ three bones here, then **↻** three other bones here.

★ 30 : **Loyal Pit Bull**

↻★ bones here. Bury a bone here.



GAME-END BONUS

↻↻ three bones here, then **↻** three other bones here.

+ 29 : **Friendly Maltese**

Bury a bone here.. **↻** one bone at each of **+** different groups.

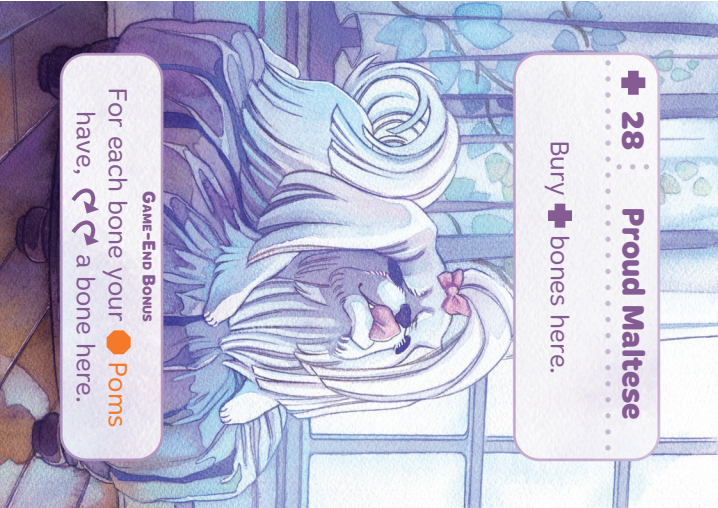


GAME-END BONUS

For each bone your **● Poms** have, **↻** a bone here.

+ 28 : **Proud Maltese**

Bury **+** bones here.



GAME-END BONUS

For each bone your **● Poms** have, **↻** a bone here.



★ 35 Caring Pit Bull

One group with no bones buries ★ bones.

★ 34 Crafty Pit Bull

Each group with less than ★ bones buries a bone.

★ 33 Clever Pit Bull

↻ each bone in one pile with ★ bones or less.

★ 32 Brave Pit Bull

Bury a bone here. Move up to ★ bones here to other groups.

GAME-END BONUS

↻ three bones here, then
↻ three other bones here.

GAME-END BONUS

↻ three bones here, then
↻ three other bones here.

GAME-END BONUS

↻ three bones here, then
↻ three other bones here.

GAME-END BONUS

↻ three bones here, then
↻ three other bones here.

★ 39 Friendly Pit Bull

Bury a bone here. ↻ one bone at each of ★ different groups.

★ 38 Proud Pit Bull

Bury ★ bones here.

★ 37 Playful Pit Bull

Draw ★ pups. Play them all, ignoring their effects.

★ 36 Loving Pit Bull

★ groups each bury a bone.

GAME-END BONUS

↻ three bones here, then
↻ three other bones here.

GAME-END BONUS

↻ three bones here, then
↻ three other bones here.

GAME-END BONUS

↻ three bones here, then
↻ three other bones here.

GAME-END BONUS

↻ three bones here, then
↻ three other bones here.



43 **Clever Corgi**

↻ each bone in one pile with **◆** bones or less.

42 **Brave Corgi**

↻ Bury a bone here. Move up to **◆** bones here to other groups.

41 **Noble Corgi**

↻ Move up to **◆** of your bones to here. ↻ a bone here.

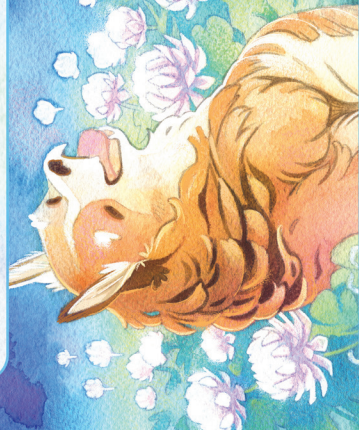
40 **Loyal Corgi**

↻ Bury a bone here. ↻ bones here.



GAME-END BONUS

↻ every bone here. (Or ↻ if you have the most **◆** Corgis)



GAME-END BONUS

↻ every bone here. (Or ↻ if you have the most **◆** Corgis)



GAME-END BONUS

↻ every bone here. (Or ↻ if you have the most **◆** Corgis)



GAME-END BONUS

↻ every bone here. (Or ↻ if you have the most **◆** Corgis)

47 **Playful Corgi**
Draw **◆** pups. Play them all, ignoring their effects.

46 **Loving Corgi**
◆ groups each bury a bone.

45 **Caring Corgi**
One group with no bones buries **◆** bones.

44 **Crafty Corgi**
Each group with less than **◆** bones buries a bone.



GAME-END BONUS

↻ every bone here. (Or ↻ if you have the most **◆** Corgis)



GAME-END BONUS

↻ every bone here. (Or ↻ if you have the most **◆** Corgis)



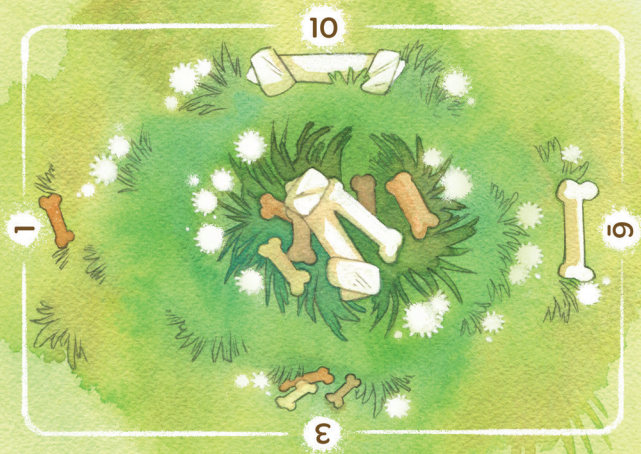
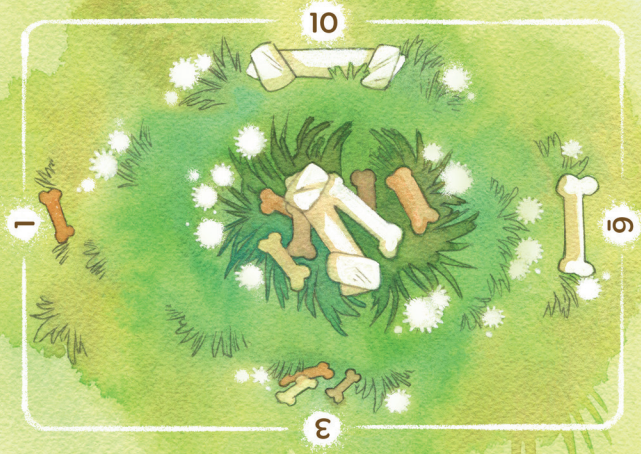
GAME-END BONUS

↻ every bone here. (Or ↻ if you have the most **◆** Corgis)



GAME-END BONUS

↻ every bone here. (Or ↻ if you have the most **◆** Corgis)



51 Noble Shepherd

Move up to ■ of your bones to here. ↻ a bone here.

50 Loyal Shepherd
↻ ■ bones here.
Bury a bone here.

52 Brave Shepherd

49 Friendly Corgi

Bury a bone here. ↻ one bone at each of ■ different groups.

48 Proud Corgi

Bury ■ bones here.

GAME-END BONUS

If you have 4+ bones here, ↻ every bone here.

GAME-END BONUS

If you have 4+ bones here, ↻ every bone here.

GAME-END BONUS

↻ every bone here. (Or ↻ if you have the most ■ Corgis)

GAME-END BONUS

↻ every bone here. (Or ↻ if you have the most ■ Corgis)

55 Caring Shepherd

One group with no bones buries ■ bones.

54 Crafty Shepherd

Each group with less than ■ bones buries a bone.

53 Clever Shepherd

↻ each bone in one pile with ■ bones or less.

52 Brave Shepherd

Bury a bone here. Move up to ■ bones here to other groups.

GAME-END BONUS

If you have 4+ bones here, ↻ every bone here.

GAME-END BONUS

If you have 4+ bones here, ↻ every bone here.

GAME-END BONUS

If you have 4+ bones here, ↻ every bone here.

GAME-END BONUS

If you have 4+ bones here, ↻ every bone here.



59 Friendly Shepherd

Bury a bone here. ↻ one bone at each of ■ different groups.

GAME-END BONUS
If you have 4+ bones here, ↻ every bone here.

58 Proud Shepherd

Bury ■ bones here.

GAME-END BONUS
If you have 4+ bones here, ↻ every bone here.

57 Playful Shepherd

Draw ■ pups. Play them all, ignoring their effects.

GAME-END BONUS
If you have 4+ bones here, ↻ every bone here.

56 Loving Shepherd

■ groups each bury a bone.

GAME-END BONUS
If you have 4+ bones here, ↻ every bone here.

63 Clever Shiba

↻ each bone in one pile with ♦ bones or less.

GAME-END BONUS
For every three bones here, ♣♣♣ one bone here.

62 Brave Shiba

Bury a bone here. Move up to ♦ bones here to other groups.

GAME-END BONUS
For every three bones here, ♣♣♣ one bone here.

61 Noble Shiba

Move up to ♦ of your bones to here. ↻ a bone here.

GAME-END BONUS
For every three bones here, ♣♣♣ one bone here.

60 Loyal Shiba

↻ ♦ bones here. Bury a bone here.

GAME-END BONUS
For every three bones here, ♣♣♣ one bone here.



◆ **64** **Crafty Shiba**
Each group with less than
◆ bones buries a bone.



GAME-END BONUS
For every three bones here,
↻↻↻ one bone here.

◆ **65** **Caring Shiba**
One group with no bones
buries ◆ bones.



GAME-END BONUS
For every three bones here,
↻↻↻ one bone here.

◆ **66** **Loving Shiba**
◆ groups each bury a bone.



GAME-END BONUS
For every three bones here,
↻↻↻ one bone here.

◆ **67** **Playful Shiba**
Draw ◆ pups. Play them all,
ignoring their effects.



GAME-END BONUS
For every three bones here,
↻↻↻ one bone here.

◆ **68** **Proud Shiba**
Bury ◆ bones here.



GAME-END BONUS
For every three bones here,
↻↻↻ one bone here.

◆ **69** **Friendly Shiba**
Bury a bone here.. ↻ one bone
at each of ◆ different groups.



GAME-END BONUS
For every three bones here,
↻↻↻ one bone here.

● **70** **Loyal Pomeranian**
↻● bones here.
Bury a bone here.



GAME-END BONUS
For each ● Pomeranian,
↻ one bone here.

● **71** **Noble Pomeranian**
Move up to ● of your bones
to here. ↻ a bone here.



GAME-END BONUS
For each ● Pomeranian,
↻ one bone here.



75 Caring Pomeranian

One group with no bones buries bones.

74 Crafty Pomeranian

Each group with less than bones buries a bone.

73 Clever Pomeranian

Bury a bone here. groups each a bone.

72 Brave Pomeranian

Bury a bone here. Move up to bones here to other groups.



GAME-END BONUS

For each Pomeranian, one bone here.



GAME-END BONUS

For each Pomeranian, one bone here.



GAME-END BONUS

For each Pomeranian, one bone here.



GAME-END BONUS

For each Pomeranian, one bone here.

79 Friendly Pomeranian

Bury a bone here. one bone at each of different groups.

78 Proud Pomeranian

Bury bones here.

77 Playful Pomeranian

Draw pups. Play them all, ignoring their effects.

76 Loving Pomeranian

groups each bury a bone.



GAME-END BONUS

For each Pomeranian, one bone here.



GAME-END BONUS

For each Pomeranian, one bone here.



GAME-END BONUS

For each Pomeranian, one bone here.



GAME-END BONUS

For each Pomeranian, one bone here.



83 **Clever Aussie**

↻ each bone in one pile with ▲ bones or less.

82 **Brave Aussie**

▲ Bury a bone here. Move up to ▲ bones here to other groups.

81 **Noble Aussie**

▲ Move up to ▲ of your bones to here. ↻ a bone here.

80 **Loyal Aussie**

↻ bones here. ▲ Bury a bone here.

83 **Clever Aussie**

↻ each bone in one pile with ▲ bones or less.

82 **Brave Aussie**

▲ Bury a bone here. Move up to ▲ bones here to other groups.

81 **Noble Aussie**

▲ Move up to ▲ of your bones to here. ↻ a bone here.

80 **Loyal Aussie**

↻ bones here. ▲ Bury a bone here.

GAME-END BONUS

↻ half (rounded-up) of the bones here.

GAME-END BONUS

↻ half (rounded-up) of the bones here.

GAME-END BONUS

↻ half (rounded-up) of the bones here.

GAME-END BONUS

↻ half (rounded-up) of the bones here.

GAME-END BONUS

↻ half (rounded-up) of the bones here.

GAME-END BONUS

↻ half (rounded-up) of the bones here.

GAME-END BONUS

↻ half (rounded-up) of the bones here.

GAME-END BONUS

↻ half (rounded-up) of the bones here.

87 **Playful Aussie**

▲ Draw ▲ pups. Play them all, ignoring their effects.

86 **Loving Aussie**

▲ groups each bury a bone.

85 **Caring Aussie**

One group with no bones buries ▲ bones.

84 **Crafty Aussie**

Each group with less than ▲ bones buries a bone.



16

Very Doggo

Bury two bones here.



SNEAKY DOGGO IS TOTALLY A PUP

Joins any group, and counts as that type of pup.

90

Such Doggo

Bury two bones here.



SNEAKY DOGGO IS TOTALLY A PUP

Joins any group, and counts as that type of pup.

89

Friendly Aussie

Bury a bone here. ↻ one bone at each of ▼ different groups.



GAME-END BONUS

↻ half (rounded-up) of the bones here.

88

Proud Aussie

Bury ▼ bones here.



GAME-END BONUS

↻ half (rounded-up) of the bones here.

95 Perfect Doggo

↻ a bone here. Bury a bone here.



SNEAKY DOGGO IS TOTALLY A PUP

Joins any group, and counts as that type of pup.

94 Finest Doggo

↻ a bone here. Bury a bone here.



SNEAKY DOGGO IS TOTALLY A PUP

Joins any group, and counts as that type of pup.

93 Quality Doggo

↻ a bone at another group. Bury one bone here.



SNEAKY DOGGO IS TOTALLY A PUP

Joins any group, and counts as that type of pup.

92 Best Doggo

↻ a bone at another group. Bury one bone here.



SNEAKY DOGGO IS TOTALLY A PUP

Joins any group, and counts as that type of pup.



99 Amaze Doggo

Bury a bone here, and bury a bone at one other group.



SNEAKY DOGGO IS TOTALLY A PUP

Joins any group, and counts as that type of pup.

98 Super Doggo

Bury a bone here, and bury a bone at one other group.



SNEAKY DOGGO IS TOTALLY A PUP

Joins any group, and counts as that type of pup.

97 Peak Doggo

↻ half the value 1 bones in one group (rounded up).



SNEAKY DOGGO IS TOTALLY A PUP

Joins any group, and counts as that type of pup.

96 Top Tier Doggo

↻ half the value 1 bones in one group (rounded up).



SNEAKY DOGGO IS TOTALLY A PUP

Joins any group, and counts as that type of pup.

